

# Peakston<sup>®</sup>

**PRODUCT CATALOGUE**





# GREETINGS

The minimalist features of Peakston's corporate image do not only represent a type of lifestyle, but also timeless fashion, and most importantly, current home design trends.

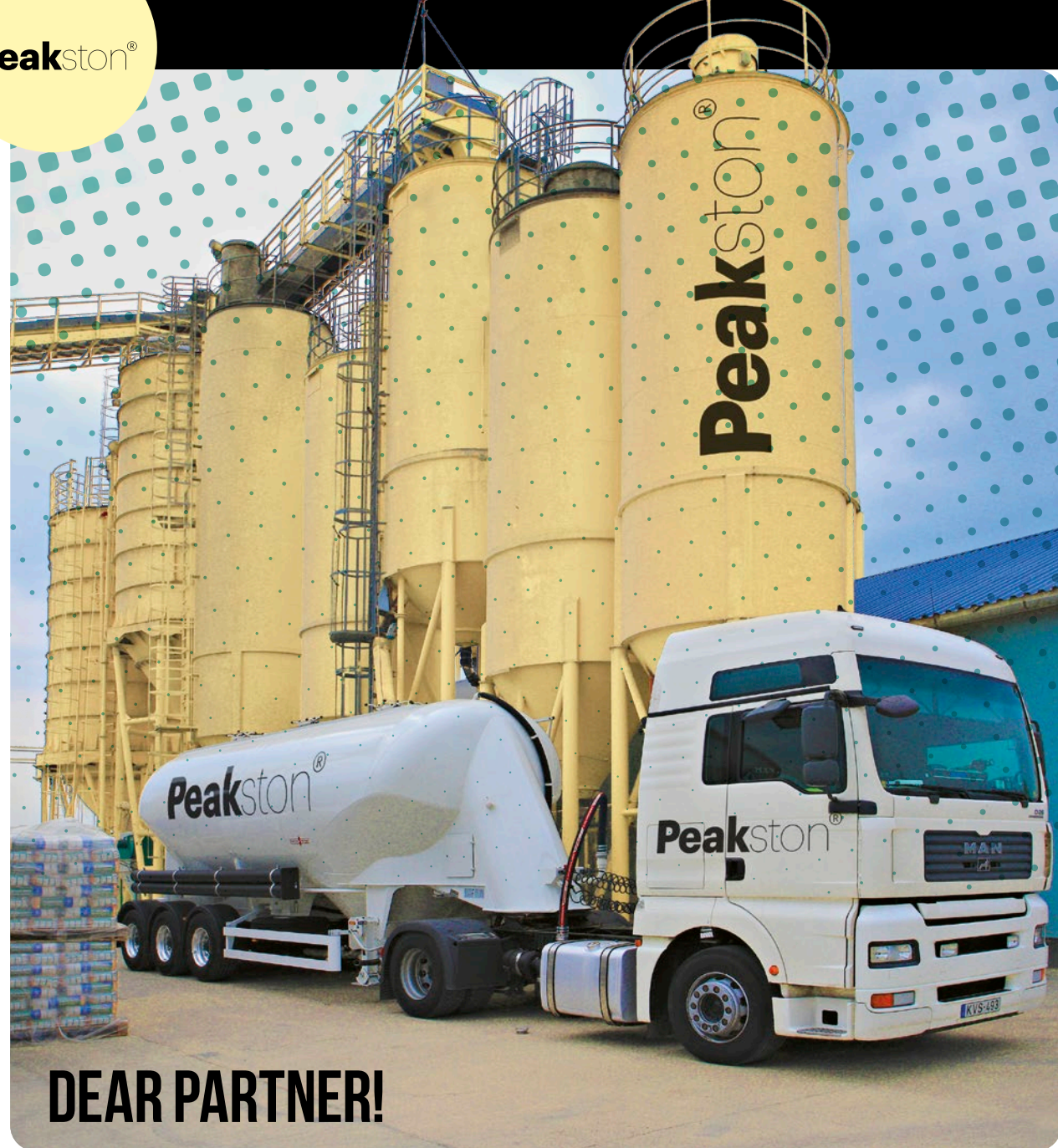
Minimalism is about simplicity and the enhancement of essential details. Let yourself be suffused with the simplicity conveyed by minimalist features and characteristics.

Under the aegis of "less is more", you can create a sublime yet inviting family nest using our products, which appear in an innovative manner on the domestic and international market.

The minimalist movement that emphasises the functionality of objects is perfectly applicable to our products, because we are also focused on quality, ease of use and cost-effectiveness.

<b>GREETINGS</b> .....	4	<b>GYPSUM PLASTERS</b> .....	26
<b>COLORINNO &amp; G3</b> .....	5	Glättmasse 0-10mm indoor gypsum skimming compound .....	27
<b>PEAKSTON PRODUCTS</b> .....	6	Cemglett indoor and outdoor skimming compound .....	27
		Gipsmörtel 6-30mm indoor plaster with gypsum binder .....	27
<b>PRIMING AND SURFACE PREPARATION</b> .....	8		
Superbond plus universal deep primer .....	9	<b>WALL PAINTS</b> .....	28
SilverCoat silicone deep primer .....	9	Topaz indoor wall paint .....	28
Grafiato acrylic plaster primer .....	9	SilverCoat silicone-based facade paint .....	29
SilverCoat silicone plaster primer .....	9	SuperGold acrylic facade paint .....	29
Hydronix impregnator .....	10	Sockelfarbe footing paint .....	29
Sandtex plinth plaster primer .....	10	Betonfarbe concrete paint .....	29
Fixabond adhesive primer .....	10		
Multiwash fungicide solution .....	10	<b>MORTARS</b> .....	30
Sandtex plinth plaster color samples .....	11	Concrete screed .....	31
		Mauermörtel masonry mortar .....	31
<b>FACADE THERMAL INSULATION SYSTEMS</b> .....	12	Verputzmörtel plastering mortar .....	31
Components of thermal insulation systems .....	13	Vorspritzer pre-sprayed adhesive coat .....	31
Types of thermal insulation systems .....	14	Sanierputz wall-drying skimming plaster .....	32
Grafiato acrylic facade plaster 1.5 mm .....	14	Sanier-feinputz skimming-finishing plaster .....	32
Grafiato acrylic facade plaster 2 mm .....	15	Concrete screed 0-8 .....	32
SilverCoat silicone facade plaster 1.5 mm .....	15		
SilverCoat silicone facade plaster 2 mm .....	15	<b>THE SECRET OF ALGAE-FREE WALLS</b> .....	33
Reflexion reflective technological coat .....	15		
Sandtex plinth plaster 0.8-1.6 mm .....	16	<b>SUPREMIX</b> .....	34
Ep klebspachtel adhesive and bedding Mortar for polystyrene .....	16	Supremix brillant decorative protective coat with glitter effect .....	35
Mw klebmasse adhesive and bedding Mortar for mineral wool .....	16	Supremix Redecor silicone topcoat for colour- and surface renovation .....	35
Thermo plus winter additive for facade plasters .....	16	Supremix Silomantel .....	36
Polystyrene thermal insulation boards .....	17	Supremix Supertherm kleber adhesive and bedding mortar for polystyrene .....	37
		Supremix Minerisol mineral wool adhesive .....	37
<b>MINERAL WOOL INSULATION PANELS</b> .....	18	Supremix acrylic plaster primer .....	37
Knauf Nobasil FKD-S .....	18	Supremix silicon plaster primer .....	37
Knauf Nobasil FKD .....	18	Supremix akril k 1,5 facade plaster .....	38
Isoroc ISOFAS 100 mineral wool .....	18	Supremix silikon k 1,5 facade plaster .....	38
Isoroc ISOPANEL 110 mineral wool .....	18	Supremix akril d2 facade plaster .....	38
Isoroc ISOFAS 130 mineral wool .....	18	Supremix silikon d2 facade plaster .....	38
Grafiato® facade colors .....	19	Supremix Nivellium self-levelling compound .....	39
		Supremix Gresflex stoneware adhesive C2T .....	39
<b>WATERPROOFING</b> .....	20	Supremix Superflex flexible tile adhesive C2TE S1 .....	39
Flexible sealing tape for detailing .....	21	Supremix Colosseum indoor wall paint .....	39
Flexafol liquid insulation foil .....	21		
Peakseal spreadable waterproofing emulsion .....	21	<b>ÖKO-FLEX</b> .....	40
SilverCoat 2K two-component waterproofing cement mortar .....	21	ÖKO-FLEX EP Klebspachtel adhesive and bedding mortar for polystyrene .....	40
		ÖKO-FLEX Standard Fliesenkleber C1 tile adhesive .....	40
<b>ADHESIVES</b> .....	22	ÖKO-FLEX Standard plus Fliesenkleber C1T tile adhesive .....	41
Fixon self-levelling compound .....	23	ÖKO-FLEX Flexkleber C2T flexible adhesive .....	41
Standard baukleber C1T tile adhesive .....	23	ÖKO-FLEX polar indoor wall paint .....	41
Flexkleber C2TE flexible tile adhesive .....	23	ÖKO-FLEX lime paint .....	41
Flix flexible grout .....	24		
Flexpert flexible stone adhesive .....	24	<b>ACCESSORIES</b> .....	42
Fugensand paving sand .....	24	<b>WAGNER</b> .....	43
Flix flexible grout color samples .....	25		





## DEAR PARTNER!

For over 25 years, Peakston Ltd. has been working to provide high quality construction products for professional workmanship. In our internationally renowned laboratory, with the assistance of highly qualified specialists, we only develop materials and supplies that fully meet the requirements of the construction market and the ÉMI Non-Profit LLC. for Quality Control and Innovation in Building.

We believe that a high-quality product and professional application together create timeless quality. Our aim is to make Peakston® products a secure part of the home for many years to come, therefore we believe it is important to provide detailed product descriptions, as well as useful information

and suggestions on the correct use of the products and their place in the system, to facilitate the application process.

Our product catalogue has been designed to make it quick and easy for you to find the quality products that are best suited for your work. If you have any questions, please visit our official website, where you will find even more detailed descriptions, technical specifications and useful ideas -from material selection to construction.

[www.peakston.hu](http://www.peakston.hu)

Thank you for your trust!  
We wish you a joyful and fruitful work  
the PEAKSTON® team.



Colorinno™'s assorted colours are the result of a long and deep research process. Our development team uses only tested, impeccable quality raw materials and a comprehensive system that combines the most popular, vibrantly fresh colours and the classic natural shades. The timeless quality of every Colorinno™ colour is backed by our expert team and weather-testing machines in our laboratory in Dunavarsány.



• COLOURS AND INNOVATION MEET •

After several years of the successful second-generation color card (Colorinno), the new color card was inspired by new construction industry trends and changing customer needs, which we have decided to name Peakston 3 Gen. We have decided that with our enhanced, premium quality façade plasters there must also be a refreshed and brand-new colour palette, which meets all needs and standards.

The new colour collection is based on decades of experience, taking into account statistical data to meet the needs of our customers. The 3 Gen colour card consists of 220 shades in total. Our aim is for our customers to find the color of their dreams in a single colour card. We use top-quality pigments for colouring, and the colour formulations were created in our state-of-the-art laboratory.



# PEAKSTON PRODUCTS

Decades of work have resulted in a wide range of products, which provide elements for a wide variety of construction situations with high quality and reliability. Besides the durability of the materials to be installed, it is also important to ensure that they are fast and easy to use, therefore we pay particular attention to these needs in our developmental process. We know that renovating or building a new house can be the investment of a lifetime, which is why we strive for every Peakston product to fully meet the diverse needs of builders and home owners.

## BENEFITS OF THE PEAKSTON RANGE:

- ◆ continuously improved, tried and tested formulations
- ◆ controlled quality
- ◆ complementary and interdependent range of products
- ◆ workflow-matched formulations
- ◆ building materials that guarantee a durable and aesthetic finish



Karcag



Tata

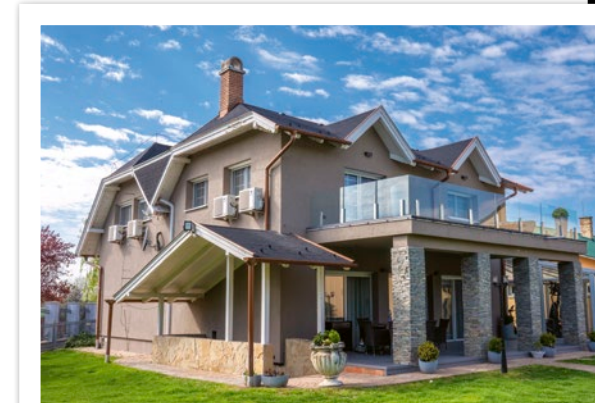
Get an insight into the world of Peakston products! Learn about the different application styles and the projects we have already completed. There are many buildings that may be a source of inspiration, for which Peakston products were used.



Szeged



Karcag



Dunavarsány



Szentes



Szeged



# PRIMING AND SURFACE PREPARATION

Just as with building structures, it is also true for wall surfaces that we can only create secure foundations with the best quality materials and the right expertise. A durable, aesthetic end result is the legitimate expectation of every client, but without a careful foundation, we cannot even get the true tone of the paints back, not to mention the risk of cracking or crumbling plaster. Peakston primers and bonding bridges improve the texture and properties of surfaces, with various coatings and coverings, while facilitating the application and adhesion of leveling layers, adhesives and paints ensuring the highest level of quality in professional hands.

## ADVANTAGES OF PEAKSTON PRIMERS:

- water dilutability
- provides strong adhesion properties
- equalizes the absorbent capacity by getting into the pores of the surface
- strengthens the surface, binds dust
- environmentally friendly technology



### SUPERBOND PLUS UNIVERSAL DEEP PRIMER

Deep penetrating colourless dispersion primer with acrylic binder and special additives, which binds dust, penetrates deep into the pores of the surface and balances its absorption to strengthen it, creating a strong and adhesive substrate for products with synthetic resin or cement binder applied won top.

**PACKAGING** 1 l bottle, 5 l and 10 l jerry cans  
**DILUTABILITY** Max. 8 l water/1 l Superbond, on strongly absorbent surfaces 1 l water/1 l Superbond  
**DRYING TIME** at 20°C dry to touch after 30 minutes/downpour-proof after 1 hour/suitable for next work process after 2-6 hours, depending on the application.  
**CONSUMPTION** Undiluted: 0.1-0.2 litre /m<sup>2</sup>  
**SHELF LIFE** Stored in a dry and cool location, protected against direct sunlight and frost, in its well- sealed, original packaging min. 12 months



1 L 324 pcs / plt / 12 pcs / shrink foil  
 5 L 64 pcs / plt  
 10 L 40 pcs / plt



### SILVERCOAT SILICONE DEEP PRIMER

Deep penetrating silicone-based colourless dispersion primer with special additives, which binds dust, penetrates deep into the pores of the surface and balances its absorption to strengthen it, creating a strong and adhesive substrate for silicone-based products applied on top.

**PACKAGING** 1 l bottle, 5 l and 10 l jerry cans  
**DILUTABILITY** Max. 8 l water/1 l SilverCoat, on strongly absorbent surfaces 1 l water/1 l SilverCoat  
**DRYING TIME** at 20°C dry to touch after 30 minutes, suitable for next work process after 2-4 hours, depending on the application  
**CONSUMPTION** Undiluted: 0.1-0.2 litre /m<sup>2</sup>  
**SHELF LIFE** Stored in a dry and cool location, protected against direct sunlight and frost, in its well- sealed, original packaging min. 12 months



1 L 324 pcs  
 5 L 64 pcs / plt  
 10 L 40 pcs / plt



### GRAFIATO ACRYLIC PLASTER PRIMER

Environmentally friendly ready-to-use dispersion plaster primer with acrylic binder and special additives. During seal coating, it binds dust and penetrates into the pores of the surface to strengthen it, creating a strong, adhesive, air- and vapour permeable substrate for Grafiato fine plasters applied on top. Can be mixed in any colour according to brought sample.

**PACKAGING** 2,5 l, 5 l, 10 l hermetically sealed plastic tubs  
**DILUTABILITY** The product is sold ready to use; if necessary, it can be diluted with maximum 10% water.  
**DRYING TIME** 6 hours at 20°C  
**CONSUMPTION** Undiluted: 0.1 -0.2 litre/m<sup>2</sup>  
**SHELF LIFE** Stored in its original packaging in a location protected against moisture, direct sunlight and frost: 12 months



2,5 L 120 pcs / plt  
 5 L 60 pcs / plt  
 10 L 33 pcs / plt



### SILVERCOAT SILICONE PLASTER PRIMER

Ready-to-use silicone-based colour plaster primer. Dispersion, with silicone binder and special additives. During seal coating, it binds dust and penetrates into the pores of the surface to strengthen it, creating a strong, adhesive, air- and vapour permeable substrate for SilverCoat silicone-based fine plasters applied on top. Can be mixed in any colour according to brought sample.

**PACKAGING** 2,5 l, 5 l, 10 l hermetically sealed plastic tubs  
**DILUTABILITY** The product is sold ready to use; if necessary, it can be diluted with maximum 10% water.  
**DRYING TIME** 6 hours at 20°C  
**CONSUMPTION** Undiluted: 0.1-0.2 litre /m<sup>2</sup>  
**SHELF LIFE** Stored in its original packaging in a location protected against moisture, direct sunlight and frost: minimum 12 months



2,5 L 120 pcs / plt  
 5 L 60 pcs / plt  
 10 L 33 pcs / plt





**HYDRONIX IMPREGNATOR**

Hydrophobises and impregnates facade wall surfaces, concrete, rendered or exposed brick walls, natural and artificial stone surfaces. Protects the surface from efflorescence and the harmful impact of frost, as it prevents the penetration of water and contaminants. It offers efficient protection against algae and fungi formation on the surface, provided that impregnation is carried out after treating it with Peakston MULTIWASH wall cleaner.



5 L 64 pcs / plt  
10 L 40 pcs / plt

**PACKAGING** 5 litre jerry can, 10 litre jerry can  
**CONSUMPTION** approx. 0.1 - 0.5 litre/m<sup>2</sup>  
**DILUTABILITY** The product must always be used undiluted.  
**DRYING TIME** at 20°C approx. 2 hours, dry-to-touch after 30 minutes  
**SHELF LIFE** Stored in its original packaging, protected against frost, moisture, and direct sunlight: 2 years



**SANDETX PLINTH PLASTER PRIMER**

Deep penetrating colourless dispersion primer with acrylic binder and special additives. During seal coating, it binds dust and penetrates into the pores of the surface to strengthen it, creating a strong and adhesive substrate for the decorative plinth plaster with synthetic resin binder applied on top. Available in seven colours designed to match the 60 different colours of the Sandtex decorative plinth plaster range.



60 pcs / plt

**PACKAGING** in 5 l hermetically sealed plastic tub  
**CONSUMPTION** 0.1 - 0.2 litre/m<sup>2</sup>  
**DILUTABILITY** If necessary, the product can be diluted with maximum 10% water.  
**DRYING TIME** 6 hours at 20°C  
**SHELF LIFE** Stored in its original packaging, protected against frost, moisture, and direct sunlight: 12 months



**FIXABOND ADHESIVE PRIMER**

Ready-to-use adhesive primer for improving the adhesion of critical indoor substrates to be covered. Suitable for preparing smooth concrete surfaces for plastering and other hard surface (e.g. tiled) walls and floors for re-laying without demolition, for improving adhesion, and ensuring uniform absorption.



2,5 kg 120 pcs / plt  
5 kg 60 pcs / plt  
20 kg 24 pcs / plt

**PACKAGING** 2.5 kg, 5 kg, 20 kg hermetically sealed plastic tubs  
**CONSUMPTION** approx. 0.1 kg/m<sup>2</sup>  
**DRYING TIME** approx. 4 hours  
**SHELF LIFE** Stored in a dry and cool location, in its well-sealed, original packaging min. 24 months.



**MULTIWASH ALGAECIDE, ANTI-MOULD AND FUNGICIDE SOLUTION**

Solution for wall materials: can be used to treat algae and mould on facades and indoor wall surfaces. The product provides temporary protection, so for long-term protection the surface needs to be repainted with mould resistant paint. Suitable for treating outdoor artificial stone objects and walls covered in algae or moss.



64 pcs / plt

**PACKAGING** 5 l hermetically sealed bottle  
**DILUTABILITY** Must be used undiluted  
**DRYING TIME** approx. 2 hours  
**CONSUMPTION** 0.1 l/m<sup>2</sup>  
**SHELF LIFE** Stored in a dry and cool location, protected against direct sunlight and frost, in its original packaging min. 24 months

**Sandtex® PLINTH PLASTER COLOR SAMPLES**



MAGICAL LAND			LIVING EARTH		
101	102	103	116	117	118
104	105	106	119	120	121
107	108	109	122	123	124
110	111	112	125	126	127
113	114	115	128	129	130
MYSTERIOUS OCEAN			TIMELESS STEEL		
131	132	133	146	147	148
134	135	136	★ 149	150	★ 151
137	138	139	152	153	154
140	141	142	155	156	157
143	144	145	158	★ 159	★ 160

For some colours there may be a slight colour difference between the printed colour samples and the products, depending on the lighting conditions. When choosing a colour, please check the actual shade of the colour you have chosen by looking at a live sample.

☼ The colours shown contain natural stones and may therefore differ from the colour samples shown in the catalogue!

★ Glitter effect



# FACADE THERMAL INSULATION SYSTEMS



Peakston Facade Thermal Insulation Systems can be used during the construction of buildings made with any construction technology, or during the subsequent thermal insulation of them. As a result of many years of development, all of our Facade Thermal Insulation Systems have the best available price-value ratio and have the certificates based on which the system can almost be applied on to any building, regardless of its type and/or size. The system is aligned in accordance with Hungarian and EU standards, as we consistently and rigorously review its compliance with the most recent quality requirements, while periodically have them checked by the competent authority, ÉMI Non-Profit Ltd. for Quality Control and Innovation in Building.

#### ADVANTAGES OF THE PEAKSTON FACADE THERMAL INSULATION SYSTEM:

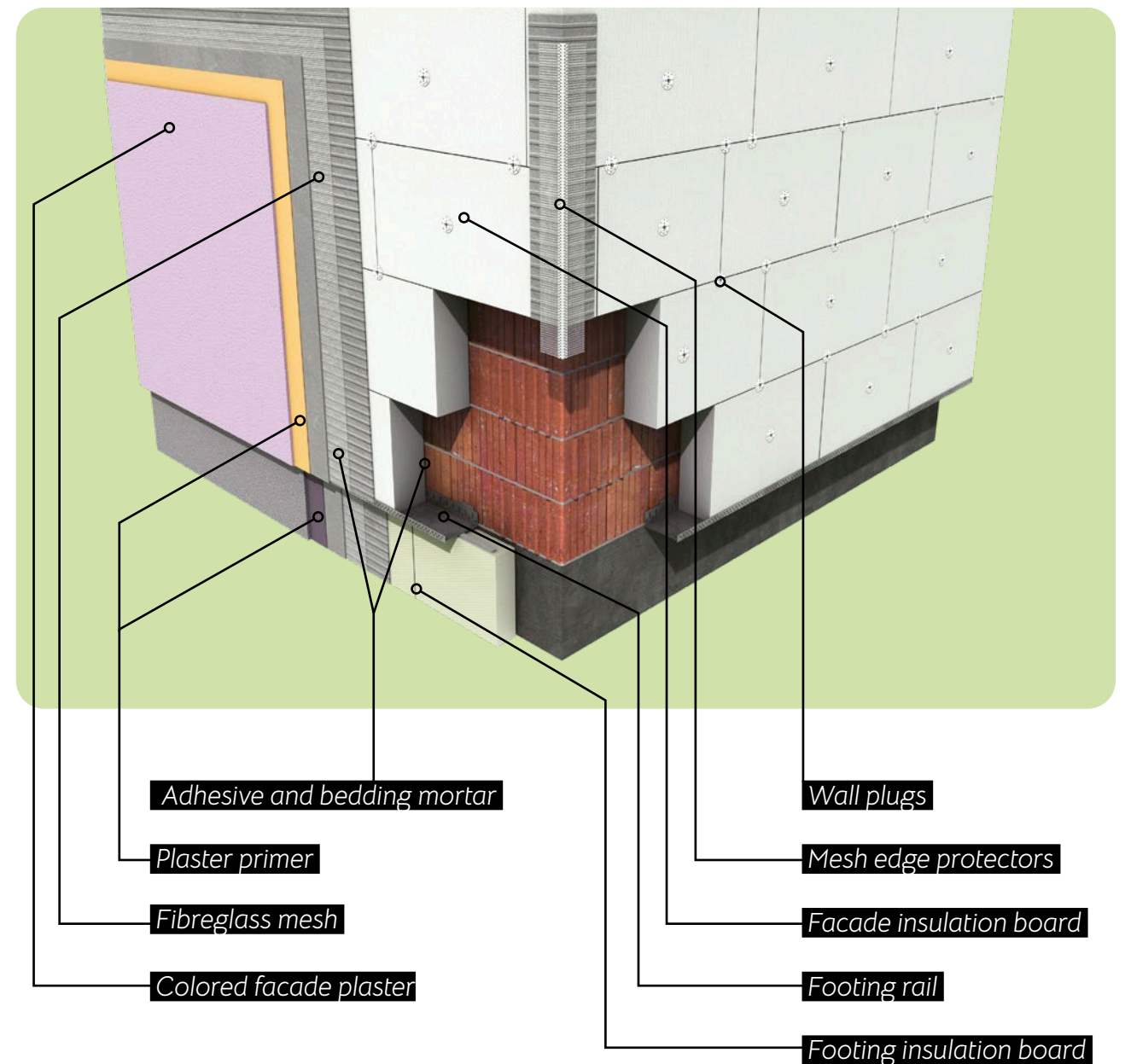
- ◆ applicable for both modern and older buildings
- ◆ aesthetic appearance
- ◆ environmentally friendly materials and technology
- ◆ efficient energy saving, up to 60% less heat loss
- ◆ improving the living climate, improving the feeling of heat and comfort
- ◆ protection against cooling in winter and warming in summer
- ◆ vapor permeable systems: mold growth is eliminated
- ◆ guarantee is provided for a complete system
- ◆ as a unified system, everything can be purchased from one place, from one manufacturer



## COMPONENTS OF THERMAL INSULATION SYSTEMS

The thermal insulation systems used on buildings are fundamentally the same: fiberglass mesh embedded in an adhesive layer on the insulation boards, which are fixed to wall surfaces with adhesives and wall plugs, and then the final surface layers are applied.

#### THE LAYERING AND ADDITIONAL ELEMENTS OF AN INSULATED FACADE:



**Caution!** Poor quality insulation systems contribute to lower energy efficiency than promised. Look for materials that are internationally accepted, tested as a whole system, and have received certification from ÉMI Non-Profit LLC. for Quality Control and Innovation in Building.



# TYPES OF THERMAL INSULATION SYSTEMS

Peakston Ltd's insulation systems meet the most stringent international standards, however we still offer a 5 + 5 year guarantee on our professionally installed facade thermal insulation systems.

## EPS SYSTEM



- EPS INSULATION BOARD,
- EP KLEBESPACHTEL,
- FIBREGLASS MESH,
- GRAFIATO PRIMER,
- GRAFIATO PLASTER

## GRAPHITE EPS SYSTEM



- EPS INSULATION BOARD WITH GRAPHITE,
- EP KLEBESPACHTEL,
- FIBREGLASS MESH,
- SILVERCOAT PRIMER,
- SILVERCOAT PLASTER
- REFLEXION COATING

## MW SYSTEM



- MINERAL WOOL INSULATION BOARD,
- MW KLEBEMASSE,
- FIBREGLASS MESH,
- SILVERCOAT PRIMER,
- SILVERCOAT PLASTER

## FOOTING



- XPS INSULATION BOARD,
- EP KLEBESPACHTEL,
- FIBREGLASS MESH,
- SANDTEX PRIMER,
- SANDTEX PLINTH PLASTER

### GRAFIATO ACRYLIC FACADE PLASTER 1.5 MM

Ready-to-use, acrylic-based decorative fine plaster for protection against environmental impacts and creating high-quality indoor and outdoor wall surfaces. Weatherproof, colourfast, moderately vapour permeable, with long life and excellent properties. Characteristics: dispersion with acrylic binder and natural mineral filler, paste-like, environmentally friendly. After plastering, the final structure can be created by smoothly evening the surface with a plastic trowel. Can be mixed in any colour according to brought sample.



24 pcs / plt



- PACKAGING 25 kg plastic tubs
- DILUTABILITY If necessary, using max. 5% water
- DRYING TIME at 20°C: 24 hours (during which the surface must be protected from rain)
- CONSUMPTION 2,4-2,6 kg/m<sup>2</sup>
- PRIMING Grafiato acrylic plaster primer
- SHELF LIFE Stored in its original packaging, protected against frost, moisture and direct sunlight: 12 months

### GRAFIATO ACRYLIC FACADE PLASTER 2 MM

Ready-to-use, acrylic-based decorative fine plaster for protection against environmental impacts and creating high-quality indoor and outdoor wall surfaces. Weatherproof, colourfast and moderately vapour permeable. After plastering, the final structure can be created with a plastic trowel, rolling the stones in the appropriate direction (e.g. horizontal, vertical, circular). Can be mixed in any colour according to brought sample.



- PACKAGING 25 kg plastic tubs
- DILUTABILITY If necessary, the product can be diluted with maximum 5% water.
- DRYING TIME at 20°C: 24 hours (during which the surface must be protected from rain)
- CONSUMPTION 2,4-2,6 kg/m<sup>2</sup>
- PRIMING Grafiato acrylic plaster primer
- SHELF LIFE Stored in its original packaging, protected against moisture, direct sunlight and frost: 12 months



24 pcs / plt



### SILVERCOAT SILICONE FACADE PLASTER 1.5 MM

Ready-to-use, environmentally friendly, paste-like, and spreadable silicone-based dispersion fine plaster. Air- and vapour permeable, washable, colourfast and weatherproof. After plastering, the final structure can be created by smoothly evening the surface with a plastic trowel. Can be mixed in any colour according to brought sample.



- PACKAGING 25 kg plastic tubs
- DILUTABILITY If necessary, the product can be diluted with maximum 5% water.
- DRYING TIME at 20°C: 24 hours (during which the surface must be protected from rain)
- CONSUMPTION 2,4-2,6 kg/m<sup>2</sup>
- PRIMING SilverCoat silicone plaster primer
- SHELF LIFE Stored in its original packaging, protected against moisture, direct sunlight and frost: 12 months



24 pcs / plt



### SILVERCOAT SILICONE FACADE PLASTER 2 MM

Ready-to-use, environmentally friendly, paste-like, and spreadable silicone-based dispersion fine plaster. Air- and vapour permeable, washable, colourfast and weatherproof. After plastering, the desired structure can be created with a plastic trowel, rolling the stones in the appropriate direction (e.g. horizontal, vertical, circular). Can be mixed in any colour according to brought sample.



- PACKAGING 25 kg plastic tubs
- DILUTABILITY If necessary, the product can be diluted with maximum 5% water.
- DRYING TIME at 20°C: 24 hours (during which the surface must be protected from rain)
- CONSUMPTION 2,4-2,6 kg/m<sup>2</sup>
- PRIMING SilverCoat silicone plaster primer
- SHELF LIFE Stored in its original packaging, protected against moisture, direct sunlight and frost: 12 months



24 pcs / plt



### REFLEXION REFLECTIVE TECHNOLOGICAL COAT

Reflective technological dispersion coat with acrylic binder and special additives, which protects the graphite insulation surface from harmful sunlight during execution works. Use it to reduce the risk of deformation in graphite insulation boards attached to the facade, caused by heat stress, until the final layer is applied to the surface. When applied, it binds dust, creating a sufficiently adhesive substrate for the polystyrene adhesive- and bedding filler when embedding the fibreglass mesh.



- PACKAGING 10-litre hermetically sealed plastic tub
- DILUTABILITY If necessary, the product can be diluted with maximum 10% water.
- DRYING TIME at 20°C: approx. 12 hours
- CONSUMPTION 0,1-0,15 l/m<sup>2</sup>
- SHELF LIFE Up to 24 months in its original packaging, protected from frost, moisture and direct sunlight



33 pcs / plt







**SANDEX PLINTH PLASTER 0.8-1.6 MM**

Environmentally friendly, acrylic-based decorative plaster containing colour stone grains, for protection against environmental impacts on key indoor and outdoor surfaces (plinth, pillars, etc.) It can be diluted with water and is easy to spread, washable, colourfast, frost-resistant and moderately vapour permeable. Available in 60 different colour combinations. Offers maximum protection for the part of the facade most exposed to environmental impacts, the plinth.



15 kg	33 pcs / plt
10,5 kg	60 pcs / plt
4,5 kg	55 pcs / plt

- PACKAGING** 15 kg plastic tubs
- DILUTABILITY** If necessary, the product can be diluted with maximum 10% water.
- DRYING TIME** at 20°C dry to touch after 8 hours /downpour-proof after 8 days /full binding time: 28 days
- CONSUMPTION** 4-4,5 kg/m<sup>2</sup>
- PRIMING** Sandtex plinth plaster primer
- SHELF LIFE** Stored in its original packaging, protected against moisture, direct sunlight and frost: 12 months



**EP KLEBESPACHTEL ADHESIVE AND BEDDING MORTAR FOR POLYSTYRENE**

Ready to use, pre-mixed, fibre-reinforced grey dry mortar in powder form, with cement and synthetic resin binder. Recommended for gluing and plastering Peakston EPS80 and graphite EPS80 insulation boards (polystyrene panels), and for embedding and smoothing fiberglass mesh.



48 pcs / plt

- PACKAGING** 25 kg/bag
- DILUTABILITY** approx. 6 l water
- DRYING TIME** 24 hours / full binding time: 28 days
- CONSUMPTION** in total 7-8 kg/m<sup>2</sup> - for gluing polystyrene panels, depending on the substrate, 2.5 kg - 3.5 kg/m<sup>2</sup>; for embedding and smoothing fiberglass mesh 4.5 kg/m<sup>2</sup>
- SHELF LIFE** Stored in its original packaging, protected against moisture, direct sunlight and frost: 12 months



**MW KLEBEMASSE ADHESIVE AND BEDDING MORTAR FOR MINERAL WOOL**

Ready to use, pre-mixed, fibre-reinforced grey dry mortar in powder form, with lime-, cement- and synthetic resin binder, mineral filler and performance additives. Recommended for gluing mineral insulation panels and mats on mineral substrates and for embedding and smoothing fiberglass mesh.



48 pcs / plt

- PACKAGING** 25 kg/bag
- DILUTABILITY** approx. 6 l water
- DRYING TIME** 24 hours / full binding time: 28 days
- CONSUMPTION** approx. 11-12 kg/m<sup>2</sup>
- SHELF LIFE** Stored in its original packaging, protected against moisture, direct sunlight and frost: 12 months



**THERMO PLUS WINTER ADDITIVE FOR FACADE PLASTERS**

The additive facilitates the application and structuring of the product in the lower zone of the application temperature (+5°)



450 pcs / plt

- PACKAGING** 1 litre, in hermetically resealable plastic bottle
- DOSAGE**
  - Grafiato acrylic facade plaster 1.5 mm: 80 ml /pail (25 kg)
  - Grafiato acrylic facade plaster 2 mm: 100 ml /pail (25 kg)
  - SilverCoat silicone facade plaster 1.5 mm: 80 ml /pail (25 kg)
  - SilverCoat silicone facade plaster 2 mm: 100 ml /pail (25 kg)
- SHELF LIFE** 24 months in its original factory packaging. The additive does not make the product frost-resistant!

**POLYSTYRENE THERMAL INSULATION BOARDS**

DATA	20 mm	30 mm	40 mm	50 mm	60 mm	70 mm	80 mm	90 mm	100 mm
PACK (M <sup>2</sup> )	12	8	6	5	4	3,5	3	2,5	2,5
PACK (M <sup>3</sup> )	0,24	0,24	0,24	0,25	0,24	0,245	0,24	0,225	0,25
BOARDS/PACK	24	16	12	10	8	7	6	5	5

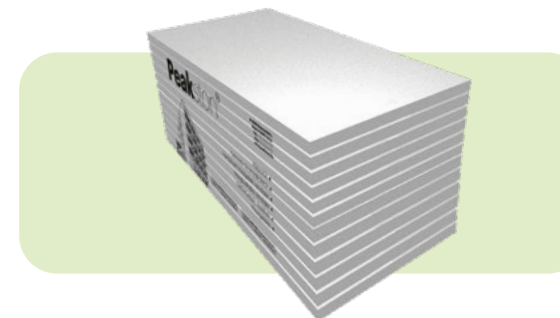
  

DATA	110 mm	120 mm	130 mm	140 mm	150 mm	160 mm	170 mm	180 mm	190 mm	200 mm
PACK (M <sup>2</sup> )	2	2	2	1,5	1,5	1,5	1,5	1	1	1
PACK (M <sup>3</sup> )	0,25	0,25	0,25	0,25	0,25	0,25	0,25	0,25	0,25	0,25
BOARDS/PACK	4	4	4	3	3	3	3	2	2	2

Polystyrene boards are also available in thicker versions, making Peakston EPS facade insulation systems documented in the National Technical Assessment (NTE) for 250 mm thickness as well.

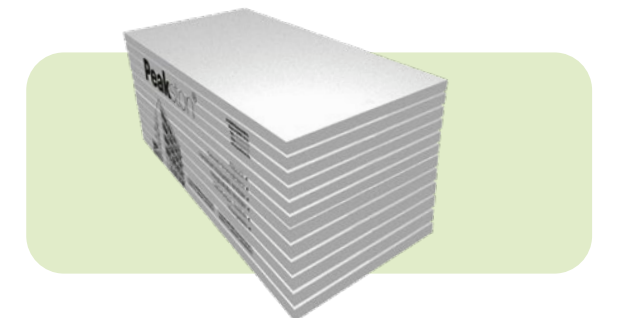
**PEAKSTON EPS 80**

Expanded polystyrene facade insulation board with graphite additive. (Peakston or Supremix)



**PEAKSTON EPS 100**

Load-bearing and walkable expanded polystyrene structural insulation board with increased compressive strength (Peakston or Supremix)



**PEAKSTON GRAFITOS EPS 80 H**

Expanded polystyrene facade insulation board with graphite additive. (Peakston or Supremix)



**XPS POLYSTYRENE FOR FOOTINGS**

Closed-cell, durable, water-repellent and mechanically resistant insulation material. (Fibrostrir)





# MINERAL WOOL INSULATION PANELS

## KNAUF NOBASIL FKD-S

Resin bonded mineral wool fibre board, for external (boundary) walls for thermal, acoustic and fire insulation.



## KNAUF NOBASIL FKD

Resin bonded mineral wool fibre board, for external (boundary) walls for thermal, acoustic and fire insulation. For window and door cavity insulation, NOBASIL FKD should be applied in 20-50 mm thickness.

## ISOROC ISOFAS 100 MINERAL WOOL

Panel made from mineral wool fibres, with synthetic resin binder, for thermal-, acoustic-, and fire safety insulation of the external side of outer (boundary) walls.



## ISOROC ISOPANEL 110 MINERAL WOOL

Panel made from mineral wool fibres, with synthetic resin binder, for thermal-, acoustic-, and fire safety insulation of the external side of outer (boundary) walls. Can be used to insulate main window/wall joints.

## ISOROC ISOFAS 130 MINERAL WOOL

Panel made from mineral wool fibres, with synthetic resin binder, for thermal-, acoustic-, and fire safety insulation of the external side of outer (boundary) walls. Can be used to insulate main window/wall joints.



# GRAFIATO® FACADE COLORS



colorinno G3 Peakston®

## Peakston® Grafiato® FACADE COLORS

1.5 mm Scratched effect      2.0 mm Rubbed effect

2021	2071	2131	2191	2221	2241	2301	2381	2441	2491
2022	2072	2132	2192	2222	2242	2302	2382	2442	2492
2023	2073	2133	2193	2223	2243	2303	2383	2443	2493
2024	2074	2134	2194	2224	2244	2304	2384	2444	2494
2041	2101	2161	2201	2231	2271	2331	2401	2471	2501
2042	2102	2162	2202	2232	2272	2332	2402	2472	2502
2043	2103	2163	2203	2233	2273	2333	2403	2473	2503
2044	2104	2164	2204	2234	2274	2334	2404	2474	2504

## Peakston® Sandtex® DECORATIVE PLINTH PLASTERS

6	7	9	11	15	17	18	21
23	27	28	30	31	33		
		34	38	41	42		

The colour range shown on the board is just a taste of our palette, our full range of colours are available in our colour card.

1,5 mm  
scrapped effect

2,0 mm  
rubbed effect

For some colours there may be a slight colour difference between the printed colour samples and the products, depending on the lighting conditions. When choosing a colour, please check the actual shade of the colour you have chosen by looking at a live sample.

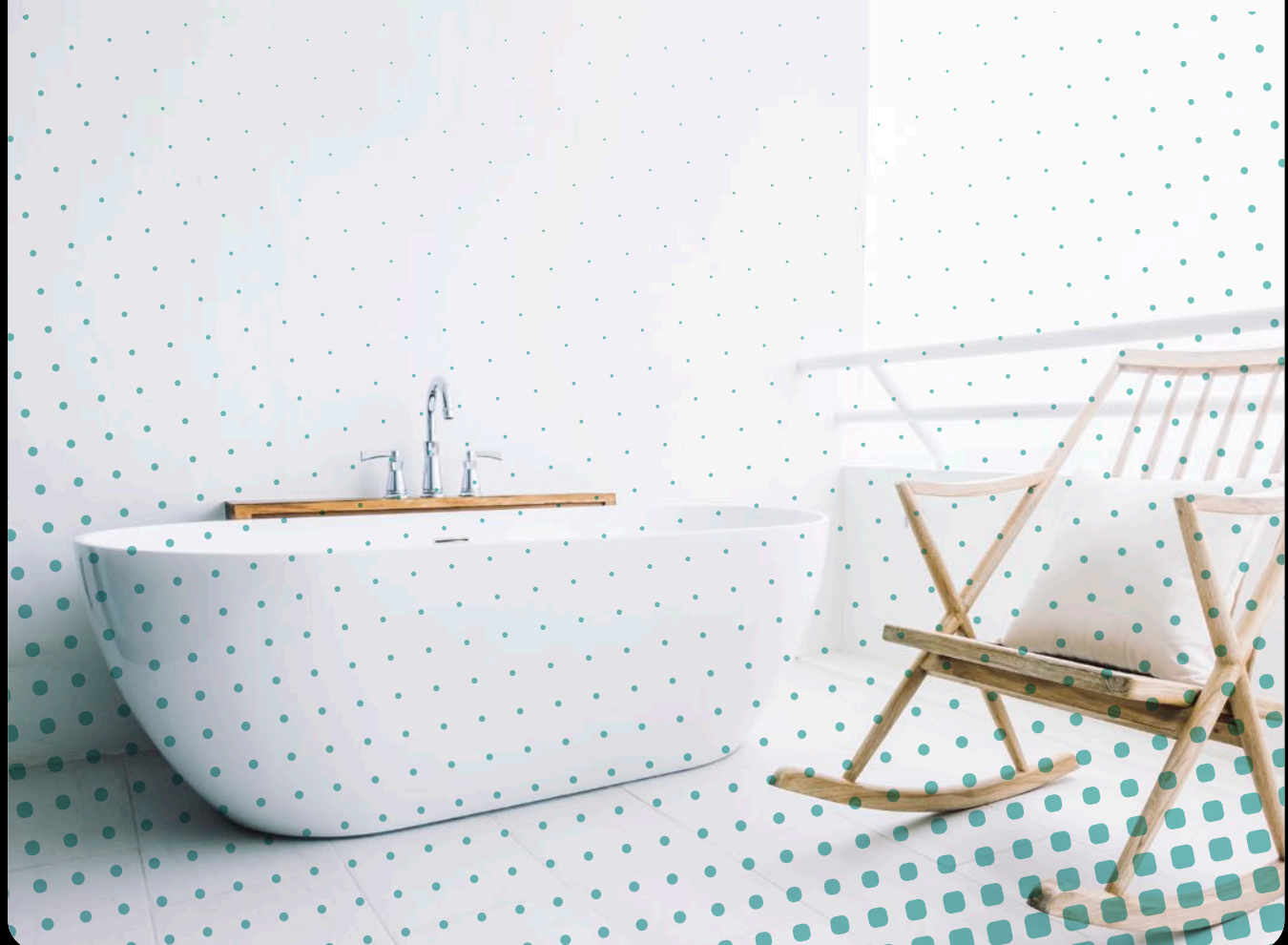


# WATERPROOFING

The creation of perfect waterproofing is one of the biggest challenges in the construction process. In order to prevent the infiltration of moisture into the building and structural elements, expertise alone is not enough without the highest quality insulation materials. The structural dampness of the building makes homes unlivable in a short time, as it causes mold, fungus and frost damage. It also reduces the support and thermal insulation capacity of the bordering structures, causing health and property damage. Ceramic tiles alone do not guarantee the waterproofness of the paved surface, it does not prevent water from seeping through. To create a watertight surface, the substrate must be coated with a continuous layer of waterproofing to prevent water infiltration.

## ADVANTAGES OF PEAKSTON WATERPROOFING TECHNOLOGY:

- ◆ fast drying formula
- ◆ easy to implement, simple use
- ◆ perfect waterproofing
- ◆ also suitable for repairing minor surface damage
- ◆ flexible waterproof properties
- ◆ excellent value for money
- ◆ tens of thousands of colors of your choice



## FLEXIBLE SEALING TAPE FOR DETAILING

Highly flexible and alkali-resistant sealing tape with textile laminate for the flexible and waterproof sealing of connected and moving joints. Simple to install using Flexafol spreadable insulation.

**PACKAGING** 50 m/roll  
**WIDTH** 12 cm  
**CONSUMPTION** 1m/m (roll is marked every metre)



100pcs / plt

## FLEXAFOL LIQUID INSULATION FOIL

Single-component, solvent-free and seamless spreadable crack-bridging insulation. Indoors, the product can be used primarily for waterproofing wet premises, e.g. bathrooms, showers, and WCs. It can also be used both outdoors and indoors as insulation membrane on floor and wall surfaces. Its surface can be tiled over directly.



**PACKAGING** 1 kg, 4 kg, 8 kg, 20 kg hermetically resealable plastic tub  
**CONSUMPTION** approx. 1.2 kg/m<sup>2</sup> (in two layers)  
**DRYING TIME** After the first layer: approx. 2 hours  
**SHELF LIFE** In a dry and cool location, in its well-sealed original packaging: min. 12 months



1 kg 264 pcs / plt  
 4 kg 60 pcs / plt  
 8 kg 33 pcs / plt  
 20 kg 24 pcs / plt

## PEAKSEAL SPREADABLE WATERPROOFING EMULSION

Acrylic-based, colourable and spreadable, environmentally friendly waterproofing emulsion made from flexible raw material. Dilutable with water, it is highly viscous, and forms a perfect waterproofing layer. Once dry, it is washable, colourfast, flexible and waterproof. Can be used to repair minor surface defects without opening up the entire surface. Can be mixed in any colour according to brought sample.



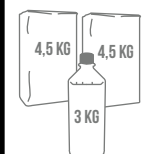
**PACKAGING** in 2.5 l, 5 l and 10 l hermetically resealable plastic tub  
**DILUTABILITY** With water, (ideally 20°C tap water) 0.1 l-0.3 l/l PEAKSEAL  
**CONSUMPTION** (depending on application) 0.5 l-1.0 l/m<sup>2</sup> - with mesh: 1.0 l-1.5 l/m<sup>2</sup>  
**DRYING TIME** After the first layer: approx. 2 hours  
**SHELF LIFE** 12 months in its original, unopened packaging, protected from frost, direct sunlight and radiating heat, in an enclosed location.



2.5 kg 120 pcs / plt  
 5 kg 60 pcs / plt  
 10 kg 33 pcs / plt

## SILVERCOAT 2K TWO-COMPONENT WATERPROOFING CEMENT MORTAR

Flexible two-component crack-bridging waterproofing mixture containing acrylic copolymer and hydraulic binder. Suitable for waterproofing against groundwater, waterproofing garages, terraces, water shafts, wells, pools, and plasterboard walls and completing missing waterproofing. Protects against water pressure on both the positive and negative sides. Cladding can be glued to the ready insulation. Component A: cement, quartz sand, additives. Component B: dispersion binder, additives.



**PACKAGING** Component A 25 kg/bag + Component B 8.3 kg/tub, or Component A 2x4.5 kg/bag + Component B 3 kg/bottle, in a plastic tub  
**DILUTABILITY** On certain substrates, in order to improve consistency for spreading, the mixed material can be diluted with max. 5 % water  
**DRYING TIME** 24 hours  
**CONSUMPTION** approx. 3 kg/m<sup>2</sup> if applied in two layers  
**SHELF LIFE** In its original packaging, in a location protected from frost, moisture and direct sunlight: 12 months



25 kg "A" Component 48 pcs/plt  
 8,3 kg "B" Component 33 pcs/plt

2x4,5 kg "A" Component + 3 kg "B" Component 24 pcs / plt



# ADHESIVES

The stability of any building – be it a family house, an apartment or an industrial facility, is ensured by the precise and durable fitting of the appropriate foundations. Behind every equally and aesthetically designed perfectly fixed coverings, is always an expertly prepared base surface with professional adhesives applied in accordance with the technical guidelines, which can withstand bearing loads, moisture and temperature fluctuations for years.

## ADVANTAGES OF PEAKSTON ADHESIVE

### AUXILIARY MATERIALS:

- ◆ subfloor levelers are suitable for creating perfect base surfaces
- ◆ flexible adhesives can be used both externally and internally
- ◆ provide extremely strong, durable, load-bearing adhesion
- ◆ wide range of products suitable and according to different material requirements
- ◆ together with our primer and waterproofing products, we offer a complete adhesive system
- ◆ environmentally friendly technology



### FIXON SELF-LEVELLING COMPOUND

Ready to use, pre-mixed, flexible self-levelling dry mortar modified with polymers, in powder form, with cement and synthetic resin binder. Characteristics: suitable for levelling concrete floors indoors, with a thickness of 2-10 mm per layer, as non-walkable surface. Can also be used in premises with floor heating. Its use is not recommended outdoors, due to slopes forming. Recommended for levelling absorbent substrates.



48 pcs / plt

PACKAGING 25 kg/bag  
 CONSUMPTION with 2 mm layer thickness: approx. 2.8 kg/m<sup>2</sup>  
 WATER CONSUMPTION 5-5.25 l/bag  
 SHELF LIFE Stored in its original packaging, protected against frost, moisture and direct sunlight: 6 months



### STANDARD BAUKLEBER C1T TILE ADHESIVE

Pre-mixed grey adhesive mortar with cement and synthetic resin binder in powder form. Characteristics: easy to process, stable, reliable quality, frost-resistant. Suitable for attaching wall and floor coverings subject to general use in indoor and covered outdoor areas.



48 pcs / plt

PACKAGING 25 kg/bag  
 CONSUMPTION 4-5 kg/m<sup>2</sup> depending on the bed  
 WATER CONSUMPTION approx. 6 l/bag  
 SHELF LIFE In a dry, covered place, protected from radiating heat and direct sunlight: 12 months



### FLEXKLEBER C2TE FLEXIBLE TILE ADHESIVE

Pre-mixed adhesive mortar with cement and synthetic resin binder in powder form, for thin- and medium thick-bed laying. Available in grey and white. Characteristics: flexible, frost-resistant, economical, and stable, with reliable quality. Suitable for attaching ceramic, stone clay, stone porcelain, artificial stone and natural stone surface coverings exposed to constant use and large temperature variations, both indoors and outdoors.



48 pcs / plt

PACKAGING 25 kg/bag  
 CONSUMPTION 4-5 kg/m<sup>2</sup> depending on the bed  
 WATER CONSUMPTION approx. 6 l/bag  
 SHELF LIFE In a dry, covered place, protected from radiating heat and direct sunlight: 12 months

Available colors  
 ○ White    ● Gray





**FLIX FLEXIBLE GROUT**

Ready-to-use grout Pre-mixed dry mortar in powder form with cement binder, mineral filler and performance additives. Suitable for filling gaps of 2-8 mm between ceramic, stone and artificial stone floor/wall tiles, both indoors and outdoors. Available in ten different colours.



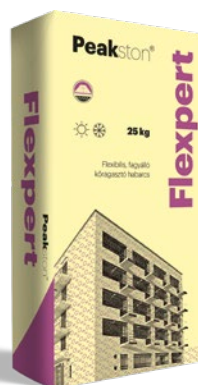
PACKAGING 5 kg/bag

CONSUMPTION 0.2-1 kg/m<sup>2</sup>, depending on the width of joints

WATER CONSUMPTION approx. 1.4 l water for 5 kg grout

SHELF LIFE In a dry, covered place, protected from radiating heat and direct sunlight: 12 months

96 pcs / plt



**FLEXPERT FLEXIBLE STONE ADHESIVE**

Pre-mixed, flexible and frost-resistant stone adhesive in powder form, with cement- and synthetic resin binder. Suitable for attaching quarried stone tiles, split tiles, stone porcelain tiles, and half-brick joints on all horizontal and vertical mineral substrates of sufficient strength, up to max. 40 mm layer thickness, both indoors and outdoors.



PACKAGING 25 kg/bag

CONSUMPTION 1 bag of dry mortar, applied 10 mm thick, covers approx. 1.5 m<sup>2</sup>

WATER CONSUMPTION approx. 6 l/bag

SHELF LIFE Stored on pallets covered with film in a dry location: 12 months

48 pcs / plt



**FUGENSAND PAVING SAND**

High-quality dried and treated quartz sand. Suitable for filling spaces between paving or road-paving stones, as spraying and filler material of epoxy coats, and for sandblasting.



PACKAGING 25 kg/bag

GRAIN SIZE 0-1 mm

CONSUMPTION Varies depending on use and the width and depth of joints.

SHELF LIFE Stored in unopened bags, on pallets covered in film, in a dry and covered location: unlimited

48 pcs / plt



# Flix



## FLEXIBLE GROUT COLOR SAMPLES

For some colours there may be a slight colour difference between the printed colour samples and the products, depending on the lighting conditions. When choosing a colour, please check the actual shade of the colour you have chosen by looking at a live sample.

WHITE

JASMINE

MANHATTAN

BAHAMA

SILVER

CARMEL

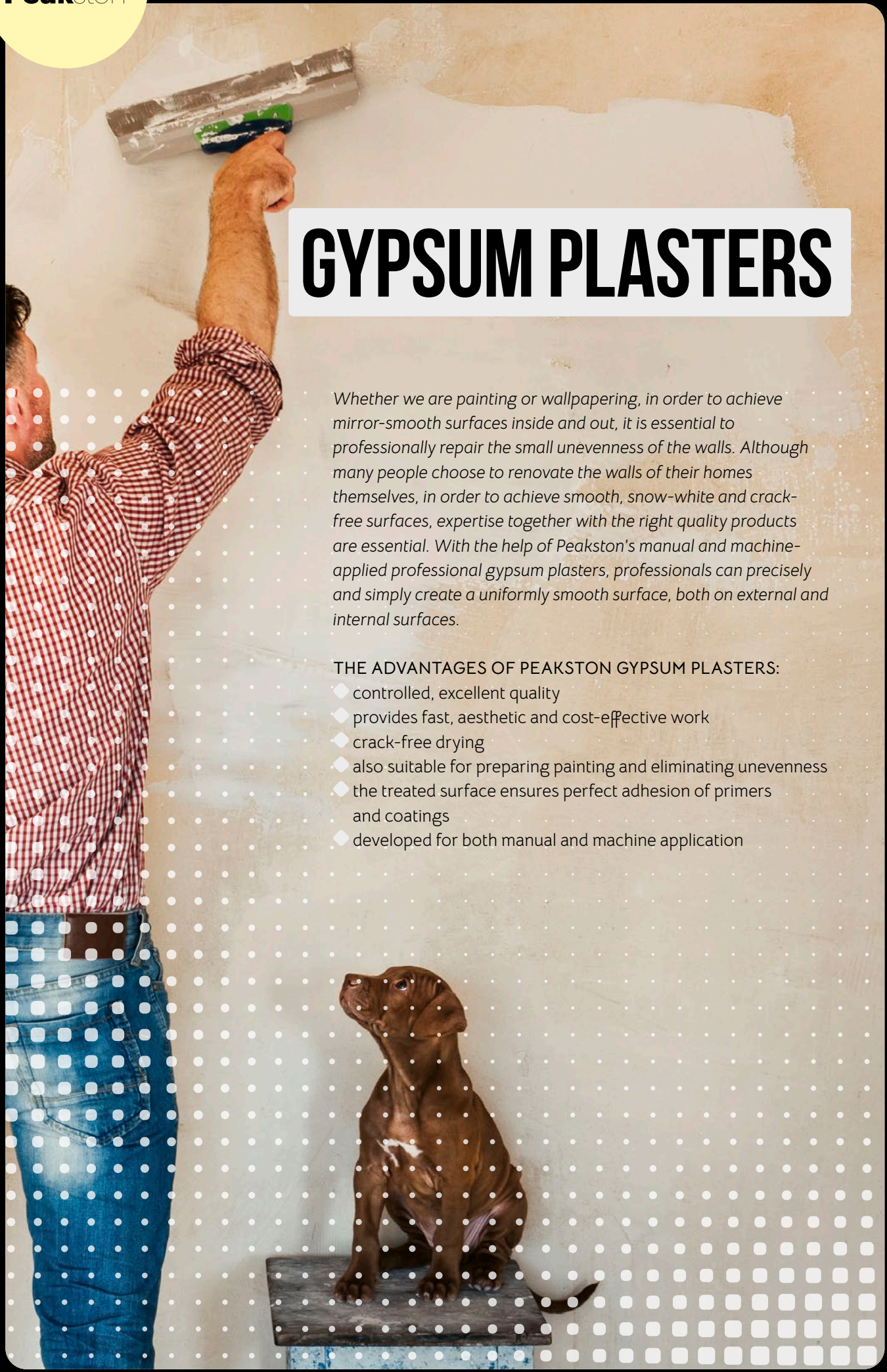
GRAY

TOBACCO

ANTRACIT

CACAO





# GYPSUM PLASTERS

Whether we are painting or wallpapering, in order to achieve mirror-smooth surfaces inside and out, it is essential to professionally repair the small unevenness of the walls. Although many people choose to renovate the walls of their homes themselves, in order to achieve smooth, snow-white and crack-free surfaces, expertise together with the right quality products are essential. With the help of Peakston's manual and machine-applied professional gypsum plasters, professionals can precisely and simply create a uniformly smooth surface, both on external and internal surfaces.

## THE ADVANTAGES OF PEAKSTON GYPSUM PLASTERS:

- ◆ controlled, excellent quality
- ◆ provides fast, aesthetic and cost-effective work
- ◆ crack-free drying
- ◆ also suitable for preparing painting and eliminating unevenness
- ◆ the treated surface ensures perfect adhesion of primers and coatings
- ◆ developed for both manual and machine application



**GLÄTTMASSE 0-10MM INDOOR GYPSUM SKIMMING COMPOUND**  
 Pre-mixed, extra-fine grain and extra-white skimming compound with gypsum for indoor use. Excelling for skimming new and old walls, ceilings, masonry structures, concrete and mortar surfaces perfectly and for creating a high-quality surface for next layers. Particularly suitable for skimming plasterboard sheets and filling their gaps, using reinforcement tape. For levelling, it can be used to eliminate surface discrepancies, and to fill plastering defects and gaps. In dry premises it can also be used as thin-bed plaster.

PACKAGING 18 kg/bag  
 CONSUMPTION 1 kg/m<sup>2</sup>/mm – application thickness: 0-10 mm  
 WATER CONSUMPTION approx. 9-10.8 l/bag  
 SHELF LIFE In a dry, covered place, protected from radiating heat and direct sunlight: 9 months



48 pcs / plt 



**CEMGLETT INDOOR AND OUTDOOR SKIMMING COMPOUND**  
 Pre-mixed powder mix with optimised composition, containing cement, plastic dispersion, mineral fillers and special performance additives. Can be used for skimming large, contiguous surfaces of outdoor facades before painting, in one layer, with a maximum thickness of 3 mm. It provides excellent adhesion on various surfaces and its application is easy and efficient.

PACKAGING 22 kg/bag  
 CONSUMPTION 0.5-2 kg/m<sup>2</sup> per layer  
 WATER CONSUMPTION approx. 7.5-10 l/bag  
 SHELF LIFE In a dry, covered place, protected from radiating heat and direct sunlight: 12 months



48 pcs / plt 



**GIPSMÖRTEL 6-30MM INDOOR PLASTER WITH GYPSUM BINDER**  
 Pre-mixed gypsum plaster with excellent properties, made from plaster of Paris with mineral- and adhesion-improving additives, for plastering and skimming. Excellent for skimming and plastering brick, porous concrete, and concrete walls and ceilings and base plasters requiring levelling large differences in layer thickness, as well as for repairing grooves in indoor premises with normal humidity.

PACKAGING 15 kg/bag  
 CONSUMPTION 1,4 kg/m<sup>2</sup>/mm  
 WATER CONSUMPTION approx. 6 l/bag  
 SHELF LIFE Stored on pallets in unopened bags in a dry and covered location: 9 months



48 pcs / plt 



# WALL PAINTS



It's no coincidence that when we talk about paints, decoration and coloring are the first things that come to mind. A well chosen color has an extraordinary effect on the atmosphere of a building or a room, it dresses up the surface. However, an experienced painter is well aware that professional paint plays a significant role in the long-term protection of the surface, in addition to creating an aesthetic interior.

### THE ADVANTAGES OF PEAKSTON PAINTS:

- ◆ top quality products for outdoor and indoor use
- ◆ excellent coverage for economical use of materials
- ◆ washable, vapor and breathable properties
- ◆ brilliant colors with long-lasting intensity
- ◆ withstands weather conditions
- ◆ tens of thousands of colors of your choice



4 L	90 pcs / plt
8 L	42 pcs / plt
14 L	24 pcs / plt

### TOPAZ INDOOR WALL PAINT

Environmentally friendly, acrylic-based outdoor wall (facade) paint with excellent coverage. Characteristics: washable, matt finish, colourfast, easy to use, economical, vapour permeable and weather-resistant. Can be mixed in any colour according to brought sample.



**PACKAGING** 4 l, 8 l and 14 l hermetically sealed plastic tubs  
**DILUTABILITY** Max. 10%  
**DRYING TIME** at 20°C, 2 hours  
**CONSUMPTION** 0.15-0.3 l/m<sup>2</sup>  
**SHELF LIFE** Stored in its original packaging in a location protected against moisture, direct sunlight and frost: 12 months



### SILVERCOAT SILICONE-BASED FACADE PAINT

Environmentally friendly, air permeable silicone-based outdoor wall (facade) paint with excellent coverage. Characteristics: washable, colourfast, vapour permeable and weather-resistant. Can be mixed in any colour according to brought sample

**PACKAGING** 2,5 l, 5 l, 10 l hermetically sealed plastic tubs  
**DILUTABILITY** If necessary, the product can be diluted with maximum 10% water.  
**DRYING TIME** at 20°C dry-to-touch after 30 minutes/full curing time 2-4 hours  
**CONSUMPTION** 0,25-0,35 l/m<sup>2</sup>  
**SHELF LIFE** Stored in its original packaging, protected against moisture, direct sunlight and frost: 12 months



2,5 L	120 pcs / plt
5 L	60 pcs / plt
10 L	33 pcs / plt



### SUPERGOLD ACRYLIC FACADE PAINT

Environmentally friendly, acrylic-based outdoor wall (facade) paint with excellent coverage. Characteristics: washable, colourfast, moderately vapour permeable and weather-resistant. Can be mixed in any colour according to brought sample.

**PACKAGING** 2,5 l, 5 l, 10 l hermetically sealed plastic tubs  
**DILUTABILITY** If necessary, the product can be diluted with maximum 10% water.  
**DRYING TIME** at 20°C dry-to-touch after 30 minutes/full curing time 2-4 hours  
**CONSUMPTION** 0,25-0,35 l/m<sup>2</sup>  
**SHELF LIFE** Stored in its original packaging, protected against moisture, direct sunlight and frost: 12 months



2,5 L	120 pcs / plt
5 L	60 pcs / plt
10 L	33 pcs / plt



### SOCKELFARBE FOOTING PAINT

Environmentally friendly acrylic-based dispersion wall paint for indoor and outdoor wall surfaces. Given its weather resistance, we recommend it for the decorative and protective painting of footings and flat or corrugated slate roofing elements, concrete, cement plaster, and cement bonded particle boards. Available in nine colours.

**PACKAGING** in 5 l hermetically sealed plastic tub  
**DILUTABILITY** If necessary, the product can be diluted with maximum 10% water.  
**DRYING TIME** at 20°C approx. 2-4 hours  
**CONSUMPTION** 0,25-0,35 l/m<sup>2</sup>  
**SHELF LIFE** In its original packaging, in a location protected from frost, moisture and direct sunlight: 12 months



60 pcs / plt



### BETONFARBE CONCRETE PAINT

Ready-to-use, environmentally friendly dispersion paint for indoor and outdoor concrete surfaces. Characteristics: silky sheen, abrasion- and oil resistant, waterproof, with excellent resistance to chemicals. Thanks to its superb adhesive properties it adheres well not only to concrete, but also various other surfaces. Can be mixed in any colour according to brought sample.

**PACKAGING** 4 l, 8 l and 15 l hermetically resealable plastic tub  
**DILUTABILITY** With max. 5% water, if necessary  
**DRYING TIME** 2 hours at 20°C  
**CONSUMPTION** 0.2-0.4 l/m<sup>2</sup>  
**SHELF LIFE** In its original packaging, in a location protected from frost, radiating heat and direct sunlight, between 5-25°C: 12 months



4 L	60 pcs / plt
8 L	33 pcs / plt
15 L	24 pcs / plt

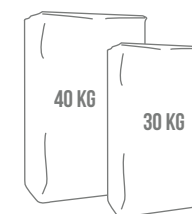


# MORTARS

Mortars are one of the oldest representatives of classical building materials. Although newer and newer substitute materials are being experimented with in modern construction techniques, high-quality mortars still play an important role in the construction industry – whether it's embedding underfloor heating, connecting walling, or covering mineral substrates.

## ADVANTAGES OF PEAKSTON CONCRETES AND MORTARS:

- ◆ high-quality products at favorable prices
- ◆ high surface strength
- ◆ crack-free bonding
- ◆ excellent resistance
- ◆ mortars that can be coarsely scraped or finely rubbed
- ◆ a wide range of packaging and products adapted to different needs



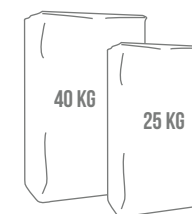
### CONCRETE SCREED

Frost-resistant, hydraulically (cement-) bonded, easy to apply concrete screed with high surface strength, for both indoor and outdoor use. Dries without cracks, and is excellent as a base for floor heating, as independent floating layer, or beneath surfaces exposed to increased mechanical stress.

**PACKAGING** 40 kg/bag, 30 kg/bag  
**CONSUMPTION** approx. 18-20 kg/m<sup>2</sup>/10mm  
**WATER CONSUMPTION** approx. 4-6 l water/40 kg bag; approx. 3-4.5 l water/30 kg bag  
**SHELF LIFE** In its original and well-sealed packaging, in a dry and cool location: min. 12 months



40 kg 35 pcs / plt  
 30 kg 42 pcs / plt



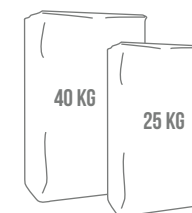
### MAUERMÖRTEL MASONRY MORTAR

Pre-mixed dry masonry mortar composed of slaked lime, cement, limestone, and additives. Suitable for brick walls, pillars, joining masonry elements, load distribution and filling gaps. For optimal consistency, 1 litre ready-to-use wet mortar requires approx. 1.6 kg dry mortar.

**PACKAGING** 25 kg/bag, 40 kg/bag  
**CONSUMPTION** 1 bag of dry mortar is sufficient for approx. 16 litres/25 litres wet mortar  
**WATER CONSUMPTION** approx. 4.5-5 l water/25 kg bag; approx. 5-6 l water/40 kg bag  
**SHELF LIFE** In a dry and covered location, in its well-sealed original packaging: min. 12 months



40 kg 35 pcs / plt  
 25 kg 48 pcs / plt



### VERPUTZMÖRTEL PLASTERING MORTAR

Pre-mixed dry lime-cement plastering mortar for manual and mechanical application indoors or outdoors. Can be levelled roughly or rubbed smoothly over the surface, on all mineral substrates. Composition: slaked lime, ground limestone, cement, and additives.

**PACKAGING** Manual: 25 kg/bag, mechanical: 40 kg/bag  
**CONSUMPTION** approx. 1,3 kg/m<sup>2</sup>/mm  
**WATER CONSUMPTION** approx. 5-6 l water/25 kg bag; approx. 8 l water/40 kg bag  
**SHELF LIFE** In a dry and covered location, in its well-sealed original packaging: min. 12 months



40 kg 35 pcs / plt  
 25 kg 48 pcs / plt



### VORSPRITZER PRE-SPRAYED ADHESIVE COAT

Mineral-bonded adhesive plaster for the durable renovation of buildings exposed to salt and moisture. Ensures adhesion between plaster and substrate and reduces the absorption of the substrate. Sprayable with machine. Preparation of the substrate for the Peakston Sanierputz renovating plaster system. Suitable on all mineral substrates both indoors and outdoors. For creating normal adhesive render with dry mortar according to the DIN 18 550 standard MG P III.

**PACKAGING** 25 kg paper bag  
**WATER CONSUMPTION** approx. 6.5 l water/ bag  
**CONSUMPTION** approx. 3-5 kg/m<sup>2</sup> (with 50-70% coverage)  
**SHELF LIFE** In its original and well-sealed packaging, in a dry and cool location: min. 6 months



48 pcs / plt





### SANIERPUTZ WALL-DRYING SKIMMING PLASTER

Peakston Sanierputz mineral-bonded skimming plaster for the durable renovation of wet and salt-crusted walls. Offers excellent salt retention and water vapour permeability and particularly high resistance to the adverse impacts of water, frost and weather. Can be applied manually or mechanically (for mechanical application wet spraying is recommended) Suitable for all mineral substrates, both indoors and outdoors.



48 pcs / plt



PACKAGING 25 kg paper bag  
 CONSUMPTION approx. 11 kg/m<sup>2</sup> (10 mm thick layer)  
 WATER CONSUMPTION approx. 5.5 l water/ bag  
 SHELF LIFE In its original and well-sealed packaging, in a dry and cool location: min. 6 months



### SANIER-FEINPUTZ SKIMMING-FINISHING PLASTER

Finishing plaster and barrier layer for the Peakston Sanierputz plaster renovation system. Offer high vapour permeability and resistance to moisture, frost, and weather. Suitable for all mineral substrates, both indoors and outdoors.



48 pcs / plt



PACKAGING 25 kg paper bag  
 WATER CONSUMPTION approx. 5-5.5 l water/ bag  
 CONSUMPTION approx. 1.25 kg/m<sup>2</sup> (1 mm thick layer)  
 SHELF LIFE In its original and well-sealed packaging, in a dry and cool location: 12 months



### CONCRETE SCREED 0-8

Frost-resistant, hydraulically bonded, easy to apply concrete screed for indoor and outdoor use, with high surface strength, (C30: >30 N/mm<sup>2</sup>), with grain size between 0-8 mm. Dries without cracks, and is excellent as a base for floor heating, as independent floating layer, filler concrete, or to create a substrate beneath surface coverings exposed to great mechanical stress.



48 pcs / plt



PACKAGING 25 kg paper bag  
 WATER CONSUMPTION approx. 2.5-3 l water/ bag  
 CONSUMPTION 18-20 kg/m<sup>2</sup> /1 cm  
 SHELF LIFE In its original and well-sealed packaging, in a dry and cool location: 12 months



# THE SECRET OF ALGAE-FREE WALLS

Wall algae and mold appear mainly in autumn and spring, first in the form of smaller or larger light green spots, and later they turn into permanent, extensive and clearly visible, aesthetically unacceptable, dark gray spots.

The reasons behind the increasing number of algae that have appeared on the facades of buildings in recent years are primarily due to the changes in the climatic conditions of our region, as the environmental conditions have had a favorable effect on the proliferation of different types of algae. In most cases the appearance of algae is not caused by reasons stemming from production or construction, but is a subsequent development on the surface afterwards.

#### ENVIRONMENTAL FACTORS

Foggy valleys, wet and waterside areas are primarily affected, but also where the number of rainy days are high. It is a general fact that algae growth starts on the most unfavourable north-facing facades of a building, or on the two adjacent facades, and can then spread to other parts of the building. It is also a risk in the cover of adjacent buildings, or in the vegetation adjacent to the wall or in the contiguous woodland behind the house. Since we have little control over environmental influences, we must eradicate the existing algae infestation in time and delay the recolonisation as much as possible.

#### THE NIGHTMARE OF FACADE ALGAE

SilverCoat MULTIWASH is a wall wash, masonry preservative solution suitable for preventing algae and fungus infestation on facades and interior wall surfaces. The product provides temporary protection, so for a long term solution, the surface should be recoated with a mold inhibiting paint. It is also suitable for the treatment of outdoor algae, mossy artificial stone objects and wall surfaces.

#### THE CANNON OF PREVENTION

SILVER COAT HYDRONIX hydrophobizes and impregnates facade wall surfaces, concrete, plastered or exposed brick walling, natural and artificial stone surfaces. It protects the surface from salt efflorescence and protects it from the damaging effects of frost. By using it, we can effectively protect against the formation of algae and fungi on the surface (after treating the surface with Peakston SilverCoat MULTIWASH wall cleaner).



#### GET RID OF IT, ALL IN TWO STEPS!

To achieve longer, but time-limited active protection, first wash the surface with Peakston SilverCoat MULTIWASH wall wash, then let it dry! Once cleaned and dry, coat the surface with Peakston SilverCoat HYDRONIX water repellent impregnator, which contains a biocidal agent that delays the development of algae and fungi! That is all!



#### THE UNCROWNED KING OF PLASTERS

Members of the SUPREMIX product family, colored, environmentally friendly plaster primers and facade plasters with acrylic and silicone binders, protect against algae and fungus, which can be used on both exterior and interior wall surfaces!

#### A SMART SOLUTION FOR POLYHISTORS

The most effective protection against algae growth - in addition to the properly selected facade coating - is prevention, i.e. to try to filter out as many of the above-mentioned risk factors as possible. If algae formation has already started on the surface, it can be treated with cleaning. This can be done with an algacide chemical, a high-pressure washer, or other mechanical cleaning (e.g. with a brush) so that the base surface is not damaged! In case of heavy contamination, after the facade has dried, the algacide-disinfectant must be left to dry on the surface after repeated washing, and then the surface must be repainted with SilverCoat SILICONE-BASED OUTDOOR WALL PAINT after priming.





# Supremix®

The Supremix product family includes our company's premium category auxiliary materials. During our laboratory research and product development, we primarily aimed to create professional products that are competitive with the best quality materials available on the market. The Supremix palette offers a comprehensive solution for those experienced professionals who work in thermal insulation, surface structuring, adhesive technology, and who aim to provide their customers with outstanding results, for which they are looking for high-quality raw materials.

## ADVANTAGES OF SUPREMEMIX PRODUCTS:

- ◆ controlled quality materials for high-quality construction
- ◆ premium category auxiliary materials
- ◆ cost-effective packaging
- ◆ a wide range of products: adhesives, surface preparation and thermal insulation work
- ◆ enables perfectly precise execution
- ◆ helps create long-lasting, high-quality surfaces

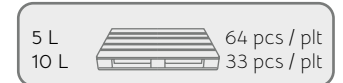


## SUPREMIX BRILLANT DECORATIVE PROTECTIVE COAT WITH GLITTER EFFECT

UV-resistant, waterproof, solvent resistant, water repellent and vapour permeable layer for manual application indoors or outdoors. Thanks to the innovative and special production technology and the carefully adjusted grain size distribution, the glittering flakes mixed into the coat create a glitter effect that is equivalent to optical precision-cut polyester glitter, but combined with a far more natural appearance. The product does NOT contain microplastic glitter, a pollutant widely used on the market; therefore it also fully meets increasingly stringent environmental regulations.



- PACKAGING** 5-litre tub, 10-litre tub  
**DILUTION** The product must always be used undiluted  
**DRYING TIME** approx. 12 hours, (depending on conditions – high temperature and/or humidity could increase the drying time)  
**CONSUMPTION** Depending on the surface, approx. 0.1-0.2 l/m<sup>2</sup>, in one coat  
**SHELF LIFE** In its original and well-sealed packaging, in a dry and cool location: 12 months

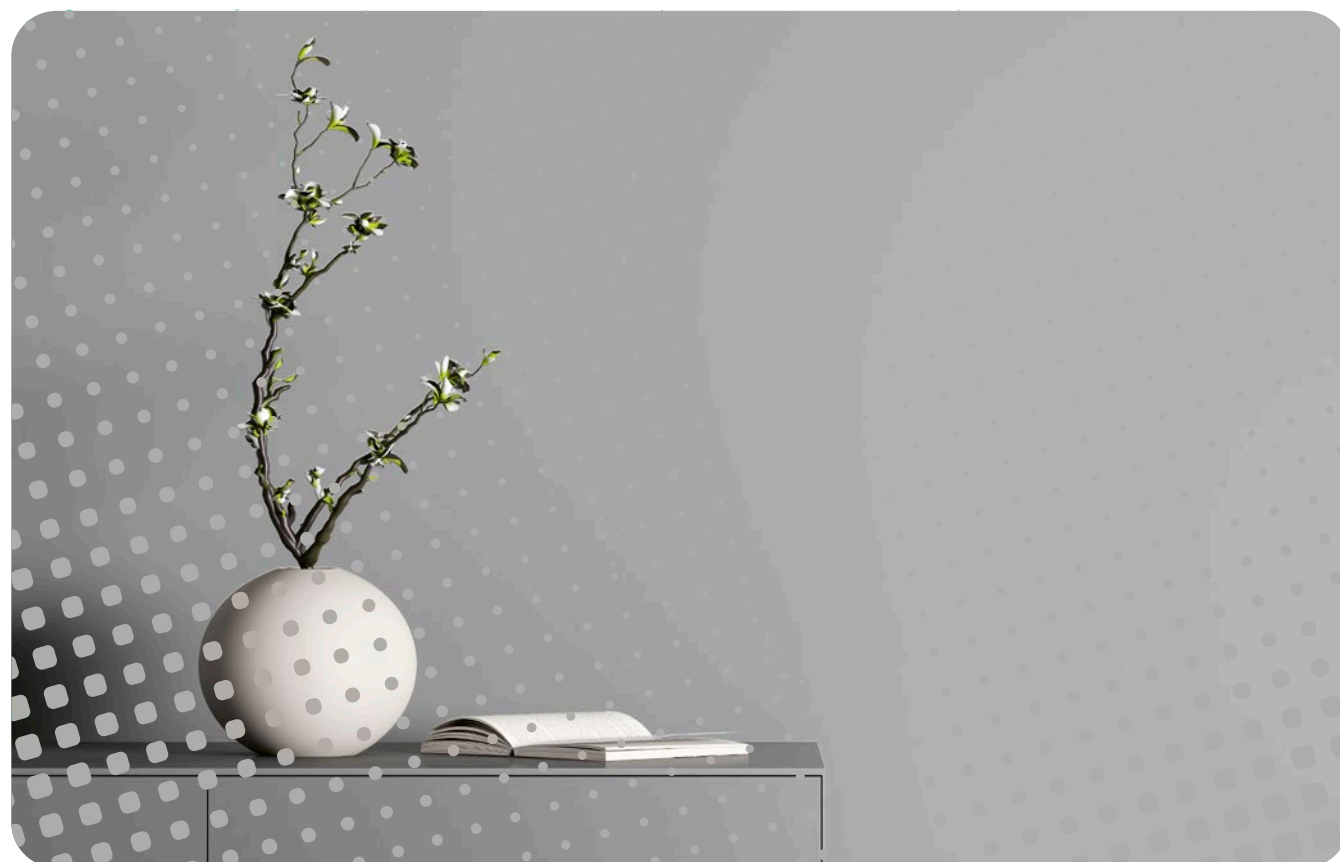
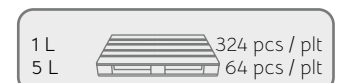


## SUPREMIX REDECOR SILICONE TOPCOAT FOR COLOUR- AND SURFACE RENOVATION

Ready-to-use, solvent-free silicone concentrate based on a mixture of silane and siloxane. Used undiluted, it repels contaminants and water and brightens colours on pigmented coatings. Suitable for all mineral surfaces, stone, artificial stone, limestone, glazed ceramics, marble coverings and objects, as well as metal and plastic surfaces.



- PACKAGING** 1-litre bottle, 5-litre jerry can  
**DRYING TIME** approx. 12-24 hours, depending on conditions  
**CONSUMPTION** Depending on the surface, approx. 0.1-0.2 l/m<sup>2</sup>, in one coat  
**SHELF LIFE** 12 months stored closed in a dry, cool and frost-free location







1 L	324 pcs / plt
5 L	64 pcs / plt
10 L	40 pcs / plt

### SUPREMIX SILOMANTEL

Supremix Silomantel is a low-viscosity hydrophobing agent. It is a surfactant wet-method emulsion with high active substance content, based on non-ionic silane-siloxane. Can be used to impregnate facade wall surfaces, concrete, plaster or exposed brick walls, natural and artificial stone surfaces and even wooden structures and surfaces. This water-repellent emulsion can be used in countless areas where the substrate needs to be protected against water penetration. It also offers protection against various contaminants and guards the surface against efflorescence and flaking caused by frost. Offers efficient protection against algae and fungi on the surface, provided that impregnation is carried out after treating it with Peakston MULTIWASH wall cleaner. Supremix Silomantel does not alter the surface appearance of impregnated substrates.



- PACKAGING** 1-litre hermetically resealable plastic bottle, 5-litre hermetically resealable plastic jerry can, 10-litre hermetically resealable plastic tub.
- DILUTABILITY** The product must always be used undiluted
- CONSUMPTION** approx. 0.15-0.30 litre/m<sup>2</sup> (depending on the absorption of the surface)
- SHELF LIFE** Up to 12 months in its original packaging, protected from frost, moisture and direct sunlight



### SUPREMIX SUPERTHERM KLEBER ADHESIVE AND BEDDING MORTAR FOR POLYSTYRENE

Ready to use, pre-mixed, fibre-reinforced grey dry mortar in powder form, with cement and synthetic resin binder. Recommended for gluing and plastering Peakston EPS80 and graphite EPS80 insulation boards (polystyrene panels), and embedding and skimming fibreglass mesh.

- PACKAGING** 25 kg paper bag
- WATER CONSUMPTION** approx. 6 l water/25 kg depending on air temperature and humidity
- DRYING TIME** 24 hours / full binding time: 28 days
- CONSUMPTION** in total 6-8 kg/m<sup>2</sup> – for gluing polystyrene boards, depending on the substrate, 3-4 kg/m<sup>2</sup>; for embedding and smoothing fibreglass mesh 3-4 kg/m<sup>2</sup>
- SHELF LIFE** Stored in its original packaging, protected against moisture, direct sunlight and frost: 12 months



48 pcs / plt
--------------



### SUPREMIX MINERISOL MINERAL WOOL ADHESIVE

Ready-to-use, pre-mixed, fibre-reinforced grey dry mortar in powder form, with lime-, cement- and synthetic resin binder, mineral filler and performance additives. Recommended for gluing mineral insulation panels and mats on mineral substrates and for embedding and smoothing fibreglass mesh.

- PACKAGING** 25 kg paper bag
- WATER CONSUMPTION** approx. 6 l water/25 kg depending on air temperature and humidity
- DRYING TIME** 24 hours / full binding time: 28 days
- CONSUMPTION** approx. 11-12 kg/m<sup>2</sup> – for gluing panels and mats, depending on the substrate, approx. 5 kg/m<sup>2</sup>; for embedding and smoothing fibreglass mesh 6-7 kg/m<sup>2</sup>
- SHELF LIFE** Stored in its original packaging, protected against moisture, direct sunlight and frost: 12 months



48 pcs / plt
--------------



### SUPREMIX ACRYLIC PLASTER PRIMER

Ready-to-use, acrylic-based colour plaster primer. Environmentally friendly colour dispersion plaster primer with acrylic binder and special additives. During seal coating, it binds dust and penetrates into the pores of the surface to strengthen it, creating a strong, adhesive, and moderately air- and vapour-permeable substrate for Supremix fine plasters applied on top. Can be mixed in any colour according to brought sample.

- PACKAGING** 2,5 l, 5 l, 10 l hermetically sealed plastic tubs
- DILUTABILITY** If necessary, the product can be diluted with maximum 10% water.
- DRYING TIME** at 20°C min. 12 hours
- CONSUMPTION** Undiluted 0.1 - 0.15 litre / m<sup>2</sup>
- SHELF LIFE** Stored in its original packaging, protected against moisture, direct sunlight and frost: 12 months



2,5 L	120 pcs / plt
5 L	60 pcs / plt
10 L	33 pcs / plt



### SUPREMIX SILICONE PLASTER PRIMER

Ready-to-use, silicone-based colour plaster primer. Environmentally friendly, colour dispersion plaster primer with silicone binder and special additives. During seal coating, it binds dust and penetrates into the pores of the surface to strengthen it, creating a strong, adhesive, and highly air- and vapour-permeable substrate for Supremix Silicon fine plasters applied on top. Can be mixed in any colour according to brought sample

- PACKAGING** 2,5 l, 5 l, 10 l hermetically sealed plastic tubs
- DILUTABILITY** 10%
- DRYING TIME** at 20°C min. 12 hours
- CONSUMPTION** Undiluted 0.1 - 0.15 litre / m<sup>2</sup>, depending on the absorption of the substrate.
- SHELF LIFE** Stored in its original packaging, protected against moisture, direct sunlight and frost: 12 months



2,5 L	120 pcs / plt
5 L	60 pcs / plt
10 L	33 pcs / plt





### SUPREMIX AKRIL K 1,5 FACADE PLASTER

Ready-to-use, paste-like, dispersion decorative fine plaster, with special acrylic binder, natural mineral filler, fibre reinforcement, anti-mould and fungicide additive, for protection against environmental impacts and for creating high-quality indoor and outdoor wall surfaces. After plastering, the final structure can be created by smoothly evening the surface with a plastic trowel. Recommended for polystyrene systems. Can be mixed in any colour according to brought sample.



24 pcs / plt

- PACKAGING 25 kg plastic tubs
- DILUTABILITY With maximum 5% water, if necessary.
- DRYING TIME at 20°C: 24 hours (during which the surface must be protected from rain)
- CONSUMPTION 2.4 – 2.6 kg/m<sup>2</sup> (1.5 mm)
- PRIMING Supremix colour acrylic plaster primer
- SHELF LIFE Stored in its original packaging, protected against moisture, direct sunlight and frost: 12 months



### SUPREMIX SILICON K 1,5 FACADE PLASTER

Environmentally friendly, paste-like, microfibre-reinforced silicone thin plaster with natural mineral filler and protection against biological attacks (algae and fungi) for indoor and outdoor wall surfaces. After plastering, the final structure can be created by smoothly evening the surface with a plastic trowel. Given its high vapour permeability, we also recommend it for mineral wool and polystyrene systems. Can be mixed in any colour according to brought sample.



24 pcs / plt

- PACKAGING 25 kg plastic tubs
- DILUTABILITY With maximum 5% water, if necessary.
- DRYING TIME at 20°C: 24 hours (during which the surface must be protected from rain)
- CONSUMPTION 2.4 – 2.6 kg/m<sup>2</sup> (1.5 mm)
- PRIMING Supremix colour acrylic plaster primer
- SHELF LIFE Stored in its original packaging, protected against moisture, direct sunlight and frost: 12 months



### SUPREMIX AKRIL D2 FACADE PLASTER

Ready-to-use, paste-like, fibre-reinforced, dispersion decorative thin plaster with acrylic binder, natural mineral filler, and anti-mould and algacide additive, for protection against environmental impacts and for creating high-quality indoor and outdoor wall surfaces. After plastering, the desired structure can be created with a plastic trowel, rolling the stones in the appropriate direction (e.g. horizontal, vertical, circular). Also recommended for polystyrene systems. Can be mixed in any colour according to brought sample.



24 pcs / plt

- PACKAGING 25 kg plastic tubs
- DILUTABILITY With maximum 5% water, if necessary.
- DRYING TIME at 20°C: 24 hours (during which the surface must be protected from rain)
- CONSUMPTION 2.4 – 2.6 kg/m<sup>2</sup>
- PRIMING Supremix colour acrylic plaster primer
- SHELF LIFE Stored in its original packaging, protected against moisture, direct sunlight and frost: 12 months



### SUPREMIX SILICON D2 FACADE PLASTER

Environmentally friendly, paste-like, microfibre-reinforced silicone thin plaster with natural mineral filler and protection against biological attacks (algae and fungi) for indoor and outdoor wall surfaces. After plastering, the desired structure can be created with a plastic trowel, rolling the stones in the appropriate direction (e.g. horizontal, vertical, circular). Given its high vapour permeability, we also recommend it for mineral wool and polystyrene systems. Can be mixed in any colour according to brought sample.



24 pcs / plt

- PACKAGING 25 kg plastic tubs
- DILUTABILITY With maximum 5% water, if necessary.
- DRYING TIME at 20°C dry-to-touch after 2 hours/downpour-proof after 10 hours/full binding time: 28 days
- CONSUMPTION 2.4 – 2.6 kg/m<sup>2</sup>
- PRIMING Supremix colour silicone plaster primer
- SHELF LIFE Stored in its original packaging, protected against moisture, direct sunlight and frost: 12 months



### SUPREMIX NIVELLIUM SELF-LEVELLING COMPOUND

Ready to use, pre-mixed, flexible and quick-curing self-levelling dry mortar modified with polymer, with cement and synthetic resin binder, in powder form. Suitable for levelling concrete floors indoors, with a thickness of 0-15 mm per layer, as non-walkable surface. Can also be used in premises with floor heating. Can be covered with ceramic tiles after 6 hours, but before laying soft vapour barrier coverings wait until the self-levelling compound has dried completely. Outdoors, its use is not recommended due to slopes forming.



48 pcs / plt

- PACKAGING 25 kg/bag
- CONSUMPTION approx. 1.6 kg/m<sup>2</sup> /mm
- MIXING WATER 5 – 5.5 l water/bag
- SHELF LIFE Stored in its original packaging, protected against moisture, direct sunlight and frost: 6 months



### SUPREMIX GRESFLEX STONEWARE ADHESIVE C2T

Pre-mixed, thin- and medium-bed grey adhesive mortar in powder form, with cement and synthetic resin binder. Characteristics: flexible, frost-resistant, economical, stable, with reliable quality. Suitable for attaching frost-resistant, solid-burnt tile-, ceramic-, stone clay-, stone porcelain-, artificial stone-, granite-, and natural stone wall and floor coverings with low absorption and subjected to constant use and temperature fluctuations, both indoors and outdoors. Also suitable for premises with floor heating.



48 pcs / plt

- PACKAGING 25 kg/bag
- CONSUMPTION 4-5 kg/m<sup>2</sup> depending on the bed
- MIXING WATER approx. 6 l water/bag
- SHELF LIFE 12 months in a dry, covered location, protected from radiating heat and direct sunlight



### SUPREMIX SUPERFLEX FLEXIBLE TILE ADHESIVE C2TE S1

Pre-mixed, highly flexible, frost-resistant, easy to process and to spread grey adhesive mortar with cement and synthetic resin binder, in powder form. Suitable for attaching ceramics, frost-resistant tiles, stoneware, artificial stone, marble and granite slabs, both indoors and outdoors, and on concrete, cement, and cement-lime plasters that meet the requirements for substrates. Can be used on surfaces subject to large temperature variations (e.g. premises with floor heating, south-facing terraces, balconies), paving slabs subject to intensive use, wet premises, swimming pools with outdoor waterproofing and for attaching the tiles used to cover swimming pools.



48 pcs / plt

- PACKAGING 25 kg / bag
- CONSUMPTION 4-5 kg/m<sup>2</sup> depending on the bed
- MIXING WATER WATER approx. 6 l water/bag
- SHELF LIFE 12 months in a dry, covered location, protected from radiating heat and direct sunlight



### SUPREMIX COLOSSEUM INDOOR WALL PAINT

Ready-to-use, easy-to-apply, washable and abrasion resistant matte indoor wall paint with excellent coverage and high vapour- and air permeability. Suitable for the high-quality creation and renovation of new and old indoor wall surfaces, painting on mineral-bonded plasters, concrete or plasterboard surfaces, and for re-coating old dispersion paint coats. Can be mixed in any colour according to brought sample.



4 L 90 pcs / plt  
8 L 42 pcs / plt  
14 L 24 pcs / plt

- PACKAGING 4 l, 8 l and 14 l hermetically resealable plastic tub
- DILUTABILITY Max. 10%
- DRYING TIME at 20°C: dry to touch after 30 minutes/full binding time 2-4 hours
- CONSUMPTION 0,15-0,3 l/m<sup>2</sup>
- SHELF LIFE Stored in its original packaging, protected against moisture, direct sunlight and frost: 12 months

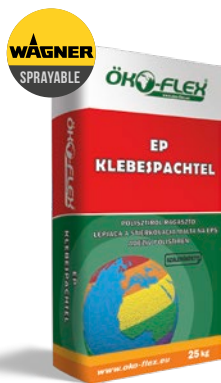


# ÖKO-FLEX®

Optimizing and keeping construction costs under control during a construction project is one of the most difficult tasks. With the Öko-Flex product line, we offer raw materials that give highly price-sensitive industry professionals and customers a sense of security. As a result of laboratory research and continuous development, we provide you with high-quality auxiliary materials under the auspices of Peakston, with which you can create timeless, aesthetic structures and surfaces during construction and renovations at the best possible price-value ratio. Öko-Flex products offer an environmentally conscious solution that meet all technical needs for professionals who search for reliability, high quality, and they also strive for cost-effective and economical implementations.

## THE ADVANTAGES OF ÖKO-FLEX PRODUCTS:

- controlled quality materials for high-quality construction
- components that comply with construction standards
- competitive price-value ratio
- economical use of materials
- wide range
- for both outdoor and indoor use



### ÖKO-FLEX EP KLEBESPACHTEL ADHESIVE AND BEDDING MORTAR FOR POLYSTYRENE

Pre-mixed, ready-to-use, fibre-reinforced grey dry mortar with cement- and synthetic resin binder, in powder form. For attaching and smoothing Peakston EPS80 and EPS 80 insulation boards with graphite (polystyrene panels) and for embedding and skimming fibreglass mesh.



48 pcs / plt

**PACKAGING** 25 kg paper bag  
**WATER CONSUMPTION** approx. 6 l water/25 kg depending on air temperature and humidity  
**CONSUMPTION** in total 7-8 kg/m<sup>2</sup> - for gluing polystyrene boards, depending on the substrate, 2.5 - 3.5 kg/m<sup>2</sup>; for embedding and smoothing fibreglass mesh 4.5 kg/m<sup>2</sup>  
**SHELF LIFE** Stored in its original packaging, protected against moisture, direct sunlight and frost: 12 months



### ÖKO-FLEX STANDARD FLIESENKLEBER C1 TILE ADHESIVE

Pre-mixed grey adhesive mortar with cement- and synthetic resin binder, in powder form. Easy to apply and stable, with reliable quality. Suitable for general use indoors, primarily for attaching floor coverings.



48 pcs / plt

**PACKAGING** 25 kg/bag  
**CONSUMPTION** 4-5 kg/m<sup>2</sup> depending on the bed  
**WATER CONSUMPTION** approx. 6 l water/bag  
**SHELF LIFE** 12 months in a dry, covered location, protected from radiating heat and direct sunlight



### ÖKO-FLEX STANDARD PLUS FLIESENKLEBER C1T TILE ADHESIVE

Pre-mixed, frost-resistant grey adhesive mortar with cement- and synthetic resin binder, in powder form. Easy to apply and stable, with reliable quality and frost resistance. Suitable for general use in indoor and covered outdoor areas, for attaching wall- and floor coverings.

**PACKAGING** 25 kg/bag  
**CONSUMPTION** 4-5 kg/m<sup>2</sup> depending on the bed  
**WATER CONSUMPTION** approx. 6 l water/bag  
**SHELF LIFE** 12 months in a dry, covered location, protected from radiating heat and direct sunlight.



48 pcs / plt



### ÖKO-FLEX FLECKLEBER C2T FLEXIBLE ADHESIVE

Pre-mixed, thin- and medium-bed grey adhesive mortar with cement- and synthetic resin binder, in powder form. Flexible, frost-resistant, economical, and stable, with reliable quality. Can be used indoors and outdoors, for attaching stone clay-, stone porcelain-, artificial stone- and natural stone wall and floor coverings. Also suitable for premises with floor heating.

**PACKAGING** 25 kg/bag  
**CONSUMPTION** 4-5 kg/m<sup>2</sup> depending on the bed  
**WATER CONSUMPTION** approx. 6 l water/bag  
**SHELF LIFE** 12 months in a dry, covered location, protected from radiating heat and direct sunlight



48 pcs / plt



### ÖKO-FLEX POLAR INDOOR WALL PAINT

Acrylic-based snow-white indoor wall paint with matte effect. Economical, easy to apply and to clean, with good vapour- and air permeability.

**PACKAGING** 8 l and 14 l hermetically resealable plastic tub  
**DILUTABILITY** With max. 10% water (ideally 20°C tap water)  
**DRYING TIME** at 20°C approx. 4 hours  
**CONSUMPTION** 0,15-0,3 l/m<sup>2</sup>  
**SHELF LIFE** Stored in its original packaging, protected against moisture, direct sunlight and frost: 12 months



14 L 24 pcs / plt  
 8 L 42 pcs / plt



### ÖKO-FLEX LIME PAINT

Water dispersion of calcium hydroxide with micronized grain structure. Excellent for the decorative protection of walls and ceilings of heritage buildings and adobe houses, or for painting or renovating various rooms of old or new residential buildings (e.g. kitchens, pantries, cellars, other damp premises, etc.) or their external walls. Can also be used on its own as binder, which makes it particularly recommended for traditional plastering. Available in a limited range of colours.

**PACKAGING** 4 l and 12 l hermetically resealable plastic tub  
**DILUTABILITY** First coat with approx. 15-20 % water, second and third coats with approx. 10% water  
**DRYING TIME** at 20°C: 4 hours  
**CONSUMPTION** 0,1-0,2 l/m<sup>2</sup>  
**SHELF LIFE** 2 years in its original, closed packaging, in a location protected from frost, moisture and direct sunlight

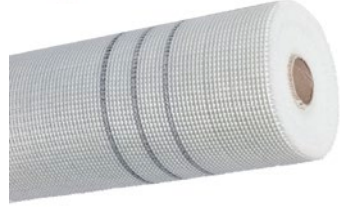


12 L 24 pcs / plt  
 4 L 80 pcs / plt

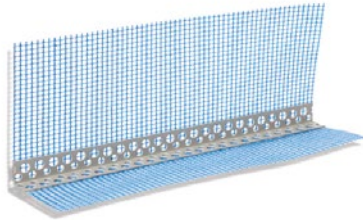




WALL PLUGS (EJOT, FISCHER)



FIBREGLASS MESH (145 GR, 160 GR)



EDGE PROTECTOR, EDGE PROTECTOR WITH FIBER MESH NET, WINDOW AND BALCONY PROFILES



STARTER PROFILES, DILATATION AND JOINTING PROFILES



1. COLORINNO™ COLOR SAMPLE BOARD
2. SANDTEX PLINTH PLASTER SAMPLE
3. FLIX GROUT COLOR SAMPLE
4. G3 COLOR PALETTE



WAGNER, a leading spraying equipment manufacturer based in Markdorf, Germany, delivers cutting edge technology since 1947. Its innovative machines cover the building trade's needs from spraying lacquers, varnishes, dispersion and latex paints for walls and facades to application of plasters, mortars and grouting. Multiple different technologies, ranging from piston pumps, membrane pumps to worm pumps for heavier materials are used in our machines.

Our entry level units offer competitive price and easy operation to customers wanting to switch over from traditional paint application methods to efficient and modern machine spraying. Our different product families offer solutions for every need from sporadic to industrial all-day use with the challenges of covering multiple thousands of square meters.



With the needs of our customers in mind, we develop the innovations today that tomorrow become the benchmark in the industry – often in collaboration with leading materials manufacturers. We continuously test materials to be able to inform our customers which type of machine, nozzle, pressure and settings they need to spray a specific type of material for the best possible surface quality.



DINOCOOP is the importer and exclusive representative of WAGNER Decorative finishing, Consumer and Professional divisions in Hungary. We keep the machines for the building trade, along with accessories and spare parts continuously on stock. We offer trainings, repair services, expert advice and testing for our customers.



PEAKSTON KFT. 2336 Dunavarsány,  
Bajai út 2090.  
telephone: +36 24 814 700  
e-mail: [peakston@peakston.hu](mailto:peakston@peakston.hu)  
web: [www.peakston.hu](http://www.peakston.hu)

 Peakston Magyarország  
 peakston\_kft

**Peakston**<sup>®</sup>

**Supremix**<sup>®</sup>

**ÖKO-FLEX**<sup>®</sup>

